

NW TECS

# Building Management Solutions & Automation

PRESENTATION

---



# About Us

**NW TECS** is led by recognized leaders in enterprise technology solutions in the region. Through its business units, the company covers a wide range of services and products, Engineered Solutions, Electrical Installation, Covering the different comprehensive sectors in the market through our large client base ranging between end users & alliances. The management and its value added distributors comprise of at least 20 years track record in the region.



## Integrity

We deliver our promises, not more, and our promises are very BIG. Clients are priorities.



## Transparency

No hidden costs, no tricky statements, our credibility is most important



## Quality

We only offer quality products that make up remarkable solutions.

# welcome message

## G r o w i n g   T o g e t h e r

Dear Future Value Clients,

For over 20 years, we have been able to provide connected and integrated solutions and making businesses, more efficient, smart and more efficient.

Your businesses and buildings can benefit from our comprehensive expertise, regional experience and state-of-the-art technologies - all from one single source.

We look forward to providing you with best cost effective solutions exceeding your expectations.

Wael Itani  
CEO

# Geographical Presence

Depending on your region and location, we can offer:

Provider of security, safety and communication products and solutions worldwide



**GCC region**

## Areas:

- ▶ Security and Safety
- ▶ Communications
- ▶ BMS
- ▶ Artificial Intelligence

Your partner for integrated and connected building solutions in selected regions



**MENA region**

## Energy and building solutions

### Areas:

- ▶ Life & Safety
- ▶ Building automation
- ▶ Energy services

### Services

- ▶ Project planning & consulting
- ▶ Installation
- ▶ Operation
- ▶ Additional services

In collaboration with Security Systems

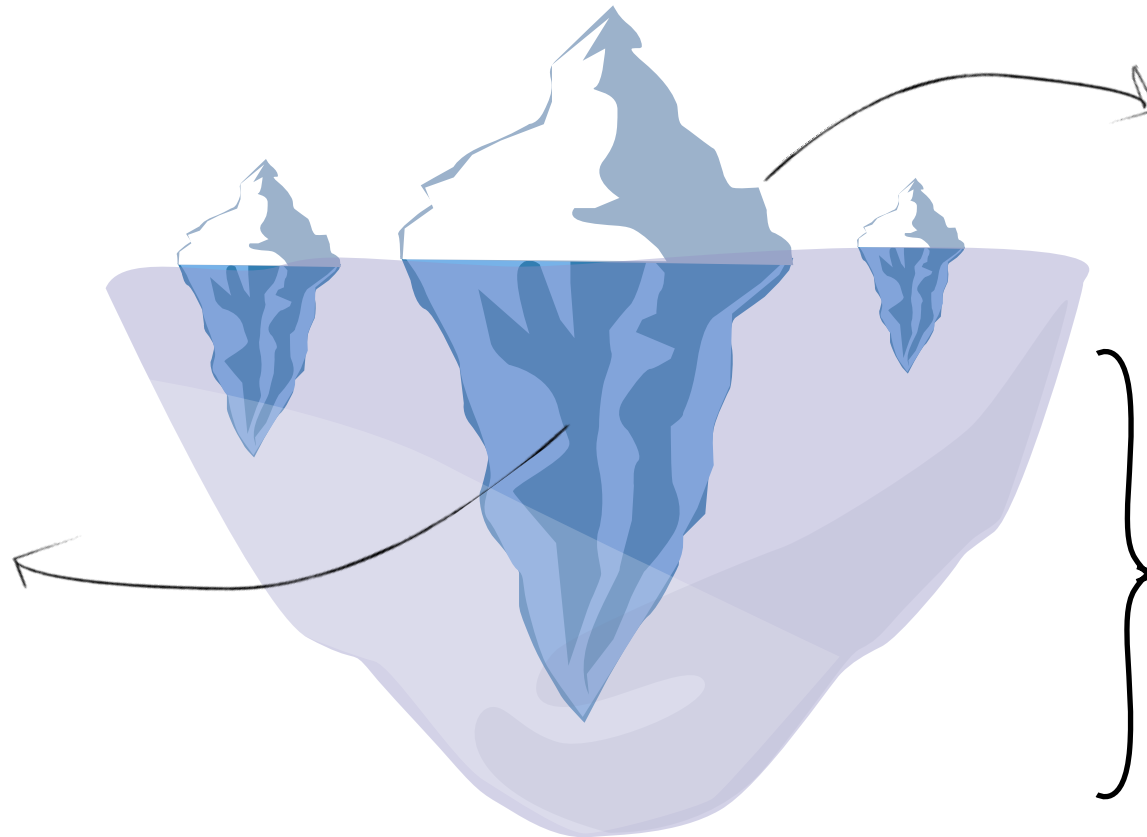


# How Problems are Resolved

Engineering Approach

## This is the Real Problem:

Complex projects are tackled with integrated solutions approach, capitalizing on our experts and specialists.



## This is what Client see:

The client always see the project as a solution demand with specific result.

## The Challenge area:

Comprehensive solution that connects all systems and uses available technology to answer requirement.

# Video, AI & Safety

## One Stop Shop Distribution

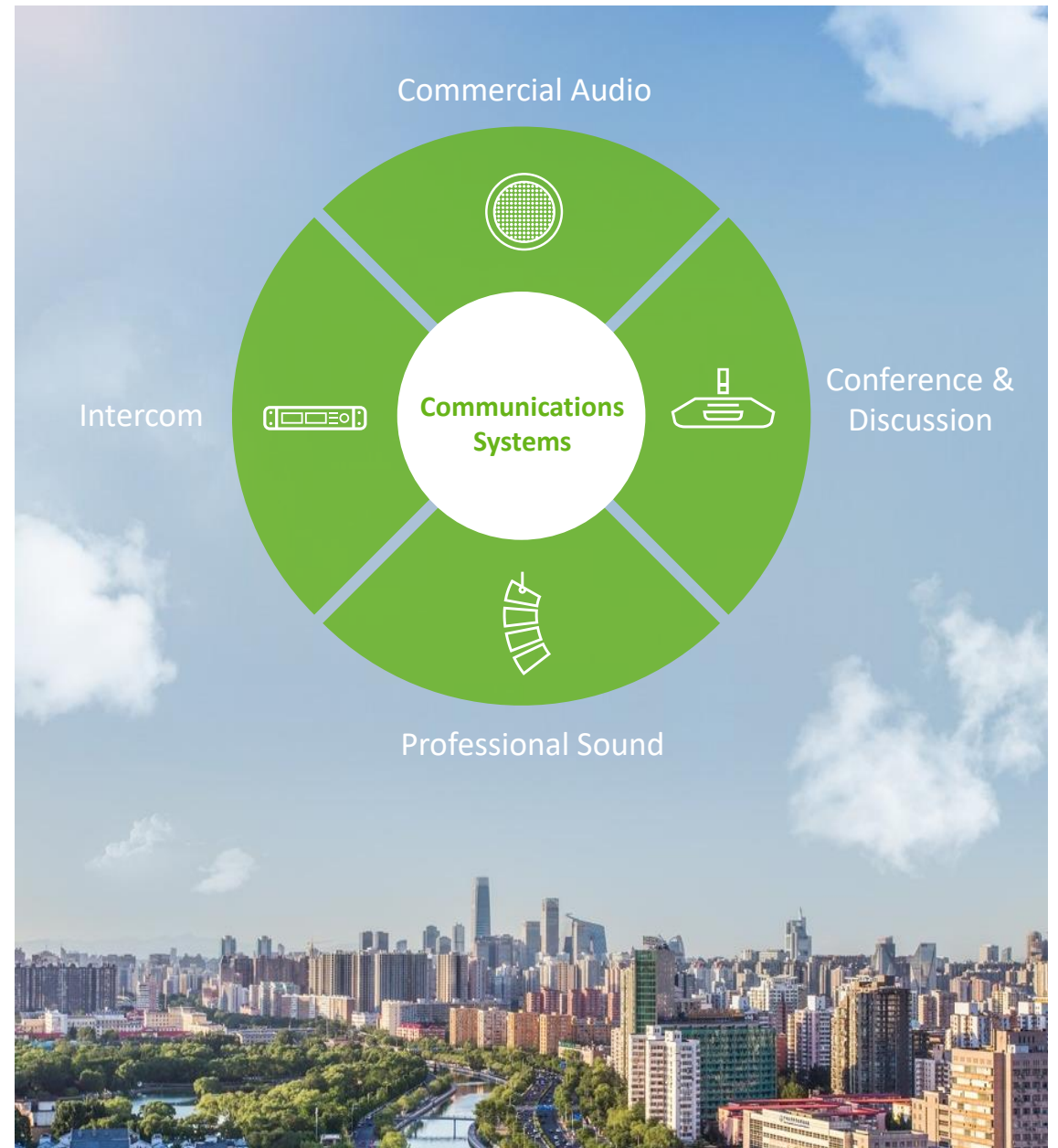
The product portfolio covers all ranges of Security and Safety systems in order to offer our partners a turnkey solution for their projects. We are a one stop-shop for a kinds of projects ranging from commercial and residential to business and retail.



# Communication Systems

## One Stop Shop Distribution

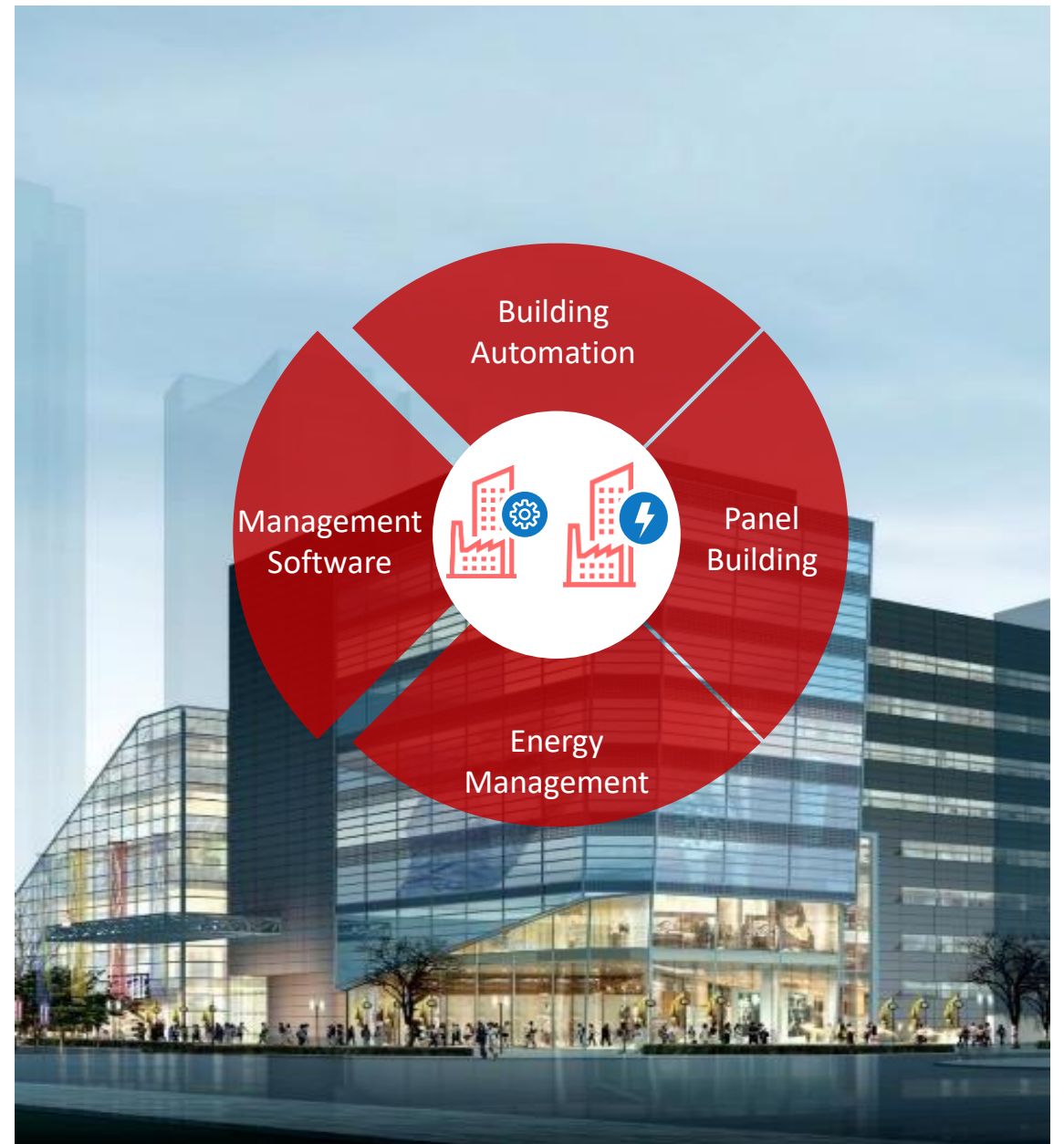
Audio visual solutions from simple small commercial audio projects to complex integrated professional sound system for conference halls and university campuses, hotels and convention centers



# Building Management Systems

## Create Comfort. Control Energy

Bosch-GFR Building Automation is a BMS system at heart, but so much more when it comes to holistic solution for a complete building operation, facility management, and energy saving.





# Solution

## Single Source of Integration Overview

Parking



Restricted access:  
elevators



Motion Detection



Conference Systems



Safety Communication



Fire Detection



Building Automation



Unauthorized entry:  
entrances



Ambiance Music & public  
announcements



Room Automation



Security Monitoring



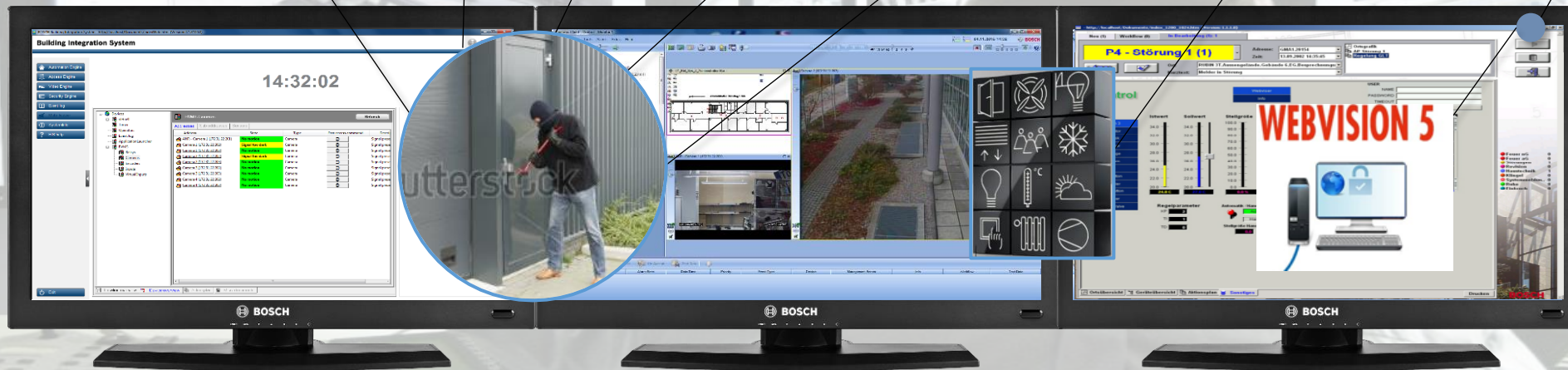
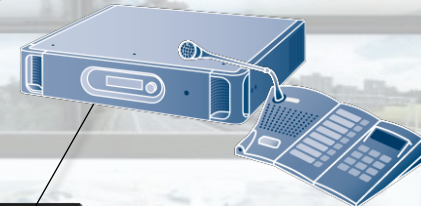
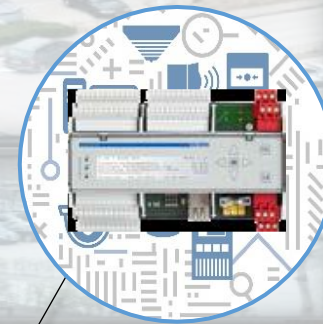
Face Recognition



# Bosch Complete

Unified Platform

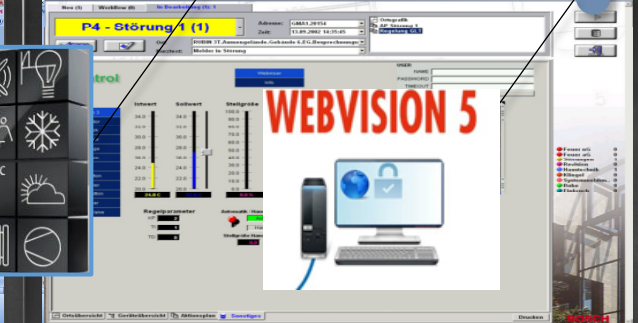
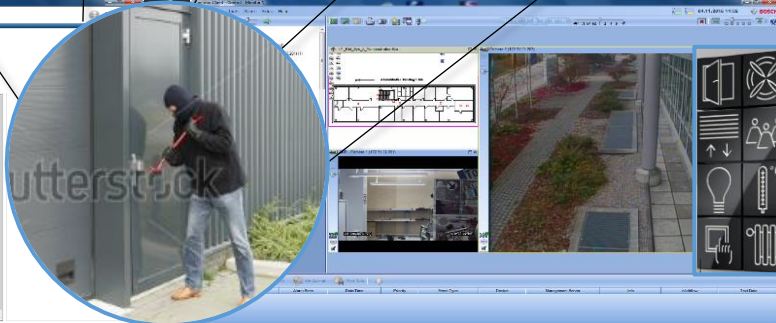
# Automation



Building Integration System

14:32:02

Alle Geräte	IP-Adresse	Gerät	Status	Hersteller
IP-Adressen	192.168.1.1	Gateway	Online	Siemens
IP-Adressen	192.168.1.2	Server	Online	Siemens
IP-Adressen	192.168.1.3	Server	Online	Siemens
IP-Adressen	192.168.1.4	Server	Online	Siemens
IP-Adressen	192.168.1.5	Server	Online	Siemens
IP-Adressen	192.168.1.6	Server	Online	Siemens
IP-Adressen	192.168.1.7	Server	Online	Siemens
IP-Adressen	192.168.1.8	Server	Online	Siemens
IP-Adressen	192.168.1.9	Server	Online	Siemens
IP-Adressen	192.168.1.10	Server	Online	Siemens



# Video Systems

To create a safer world and deliver new value



A broad portfolio of fixed and moving cameras.



## Video Analytics at the edge as standard

Analyze video data to improve security and gain clear business advantages.

## Outstanding performance

- ▶ High quality imaging technologies like starlight to easily distinguish individuals or objects, even at extreme low light levels
- ▶ Reduce bitrate up to 80% and save storage costs without compromising video quality

## Highest levels of data security and privacy protection

Integrated hardware and software measures to keep video data secure, such as a crypto co-processor and a built in trusted platform module.

All video systems product are easy to install, manage and use.

# Access Control Systems

To welcome staff and visitors and restrict intruders



Portfolio includes all access control components from different software options and controllers to a wide range of readers and credentials.



Protect secure areas from unauthorized access or unlock doors in emergencies.

Flexible and scalable – thanks to the scalability of the components, the system grows according to your security needs.

Reliable – with state-of-the-art security features and encryption.

# Intrusion Alarm

To protect people and property



Portfolio includes all access control components from different software options and controllers to a wide range of readers and credentials.



## Intrusion Alarm Systems built for customization

- ▶ Seamlessly work with Bosch IP video cameras, video management, and access control.
- ▶ A range of control panels, communicators, detectors, and accessories to provide the right solution from stand-alone retail stores to office buildings, warehouses, banks, and more.

## High quality motion detectors

- ▶ Deliver excellent catch performance while providing the highest level of false alarm immunity
- ▶ Easy to install and built to last

# Management Systems

To simplify complex security solutions



Portfolio includes the Video Management System, Building Integration System and more.



Integrated and open software solutions – Management of different security subsystems - such as access control, video surveillance, fire, public address or intrusion - on one single platform.

Flexible and scalable. Future-proof investment ideal that grows with your needs. It is ideal for large applications as airports, metros or large commercial sites.

Resilient Video Management System – operations keep up and running even when both, Management and Recording Servers fail.

Highest level of data security - full IT compatibility from installation to configuration in a secure way.

# Fire Alarm

To save lives and assets



The comprehensive portfolio includes fire panels, detectors, call points, video-based fire detection and other accessories



## Reliable in every respect

- ▶ Accurate fire detection
- ▶ Future-proof solutions
- ▶ Long-term partnership

## Innovative and technology-driven

- ▶ Video-based fire detection solutions
- ▶ Remote control, maintenance and service
- ▶ Powerful planning tools

## Flexible to the max

- ▶ Tailor-made and modular solutions
- ▶ Independent from verticals, applications or project

# Public Address

Industry Leading



Bosch develops systems that deliver the highest performance in speech and music quality. Our goal is to address changing customer needs with outstanding systems that cater for applications of every size.



Expertise and outstanding quality: Forecasting challenging situations and user needs; vast experience and expertise; highest technology performance.

Intelligent solutions: Technologies that create a fascinating experience; use of existing infrastructures; remote diagnostics and maintenance; IP-based systems and software-controlled devices.

Wide and resilient public address and speaker portfolio: Contributing to a better world; catering for applications of every size; accommodating changes to building use.

Global partnerships and closeness to customers: Supporting our customers to shape their future.



# Conference World Class Conference Systems Solutions



A leading global supplier and proven choice for the highest-profile international summits and global corporations. Award-winning, innovative industrial designs and state-of-the-art features tailored for meetings of any size.



An industry leader in the conference market for more than 60 years by consistently introducing innovative and reliable solutions.

Best in-class conferencing solutions that improves efficiency through excellent audio quality and integrated meeting solutions.

Fulfilling the needs of our customers to ensure repeated business and achieve long term partnerships.

Founder of the largest conference rental network in the world (CRN). Powered by conferencing equipment totaling over 65,000 receivers, 10,500 microphones, interpreter booths and more.

# Commercial Audio

High-performance audio solutions



Bosch commercial audio solutions provide different control methods and speaker types geared to the needs of different business environments. The only supplier that ranks among the top three firms in both the professional music and public address industries.



The value of Commercial Audio: Prolongs customer stay; subtle influence and marketing; creates recognizable music associated with a particular company or brand.

Outstanding business environment: Enhances the customer experience; creates new revenue opportunities; meets the growing expectations of customers.

A unique customer experience: Sound is a highly influential stimulus; music can recall positive memories and emotions; can mask or distract from unpleasant background noise.

Commercial Audio system features: Reliable, easy to install and use; balanced frequency response at low volumes; low profile, easily integrated into the decor.

# Energy and Building Solutions

Building Automation



**WEBVISION 5  
WEBECON**



**Energy**

**Automation**

**Security  
&  
Safety**

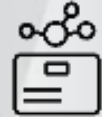
Video  
Systems



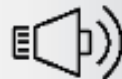
Commercial  
Audio



Access  
Control  
Systems



Public  
Address



Intrusion  
Alarm  
Systems



Critical  
Communications



Fire Alarm  
Systems



Conference  
& Discussion



**Communications**

# Room Automation

Create Comfort. Control  
Energy



GFR's room automation concept is called ROOM4D. "4D" stands for the four dimensions of modern room automation: efficiency, intelligence, functionality and design.



## Full Integrated System

Offers a variety of integration modules for all areas.

## Main Features

- ▶ BACnet IP, BACnet MS / TP, CAN, KNX / EIB, DALI, LON, M-Bus, MP-Bus, Modbus, EnOcean and the integration of web services (e.g. weather data).
- ▶ Dedicated controllers with Room4D
- ▶ Room4D efficient for Hotels, Villas and Office spaces
- ▶ User friendly web interfaces and touch screens

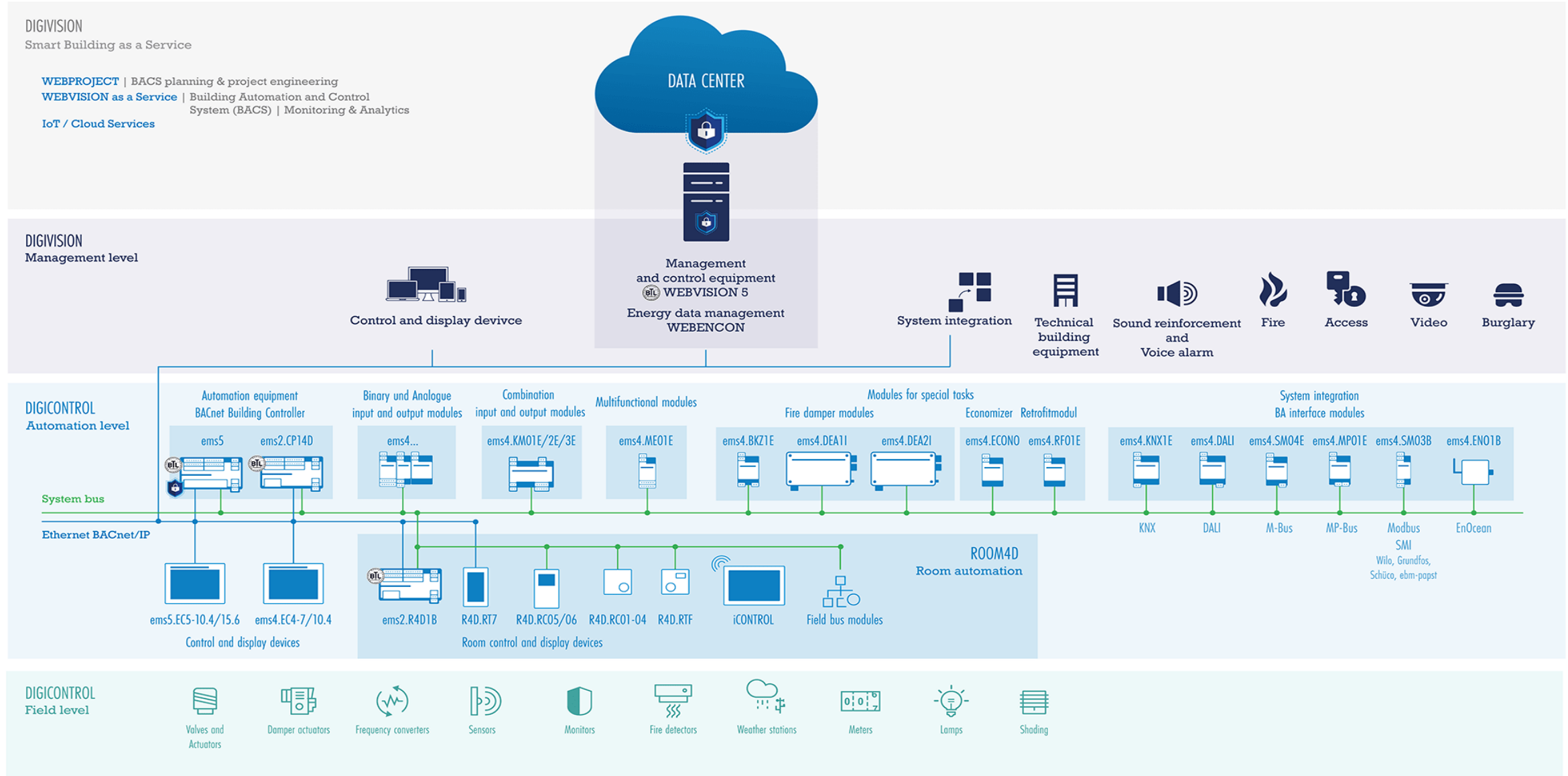
## Flexible to the max

- ▶ Tailor-made and modular solutions
- ▶ Independent from verticals, applications or project

In short, room automation ensures a reduction of energy consumption while simultaneously enhancing comfort. Furthermore, it manages the monitoring and effective control of indoor temperature, air quality, lighting and shading of rooms.

# Architecture

## Holistic view



# Application Examples

# Retail solutions

## Reduce loss, protect property and support the business



Maximize customer engagement and optimize store operations with data insights on customer behavior



Increase customer satisfaction and potential turnover managing queues with video analytics



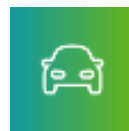
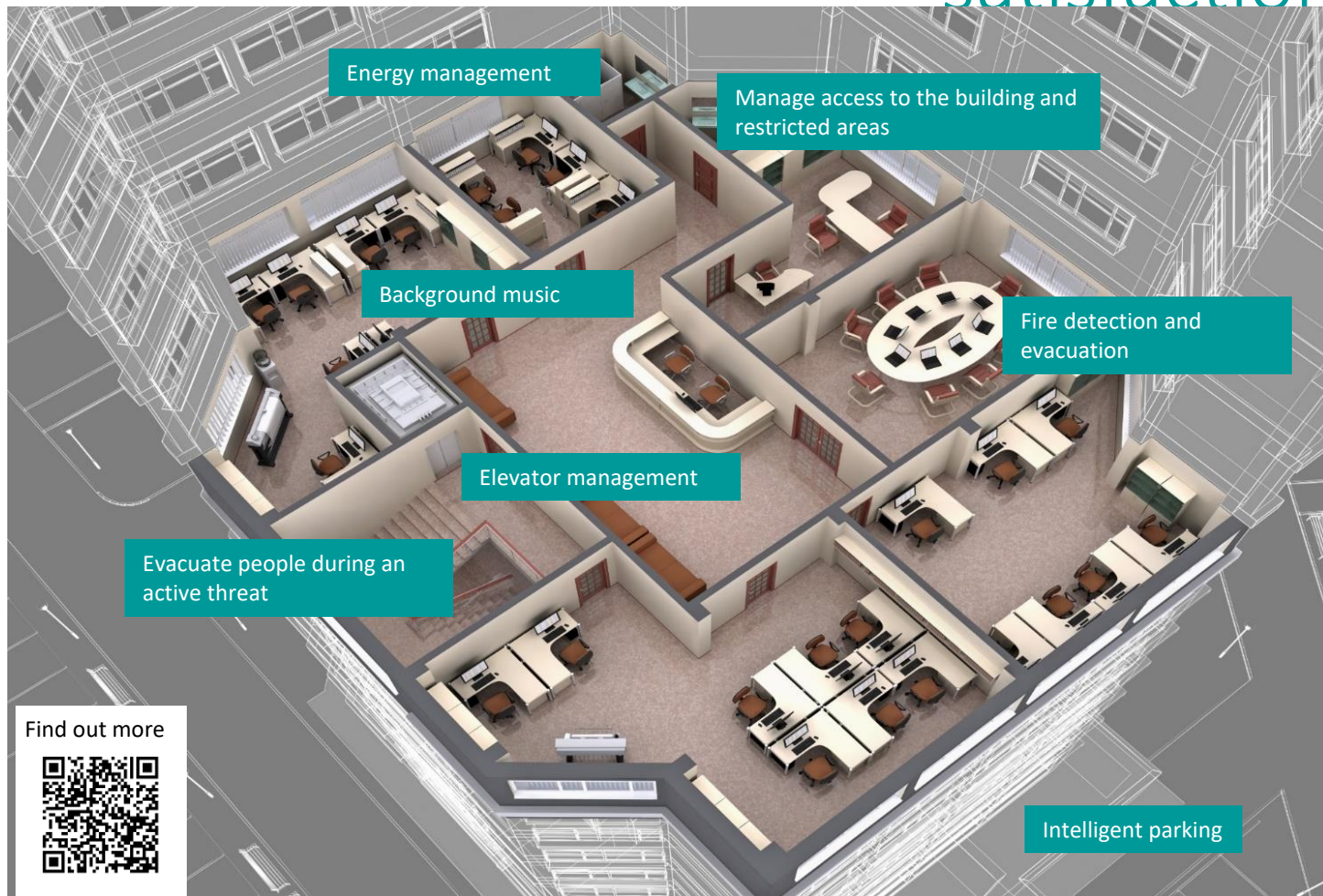
Investigate incidents quickly with search rules tailored to finding critical events



Prevent stock damage by early detection of smoke and flames

# Office buildings solutions

## Increase building security and efficiency and worker's satisfaction



Improve parking services, informing staff and visitors about available parking slots, increasing security or adapting illumination



Keep your business premises welcoming for staff and visitors while ensuring maximum protection against unauthorized intruders



Optimize elevator capacity to reduce energy consumption and ensure that only persons with adequate authorization rights can enter restricted floors



Use and manage office spaces more efficiently to lower the carbon footprint of buildings while extending their flexibility and lifetime

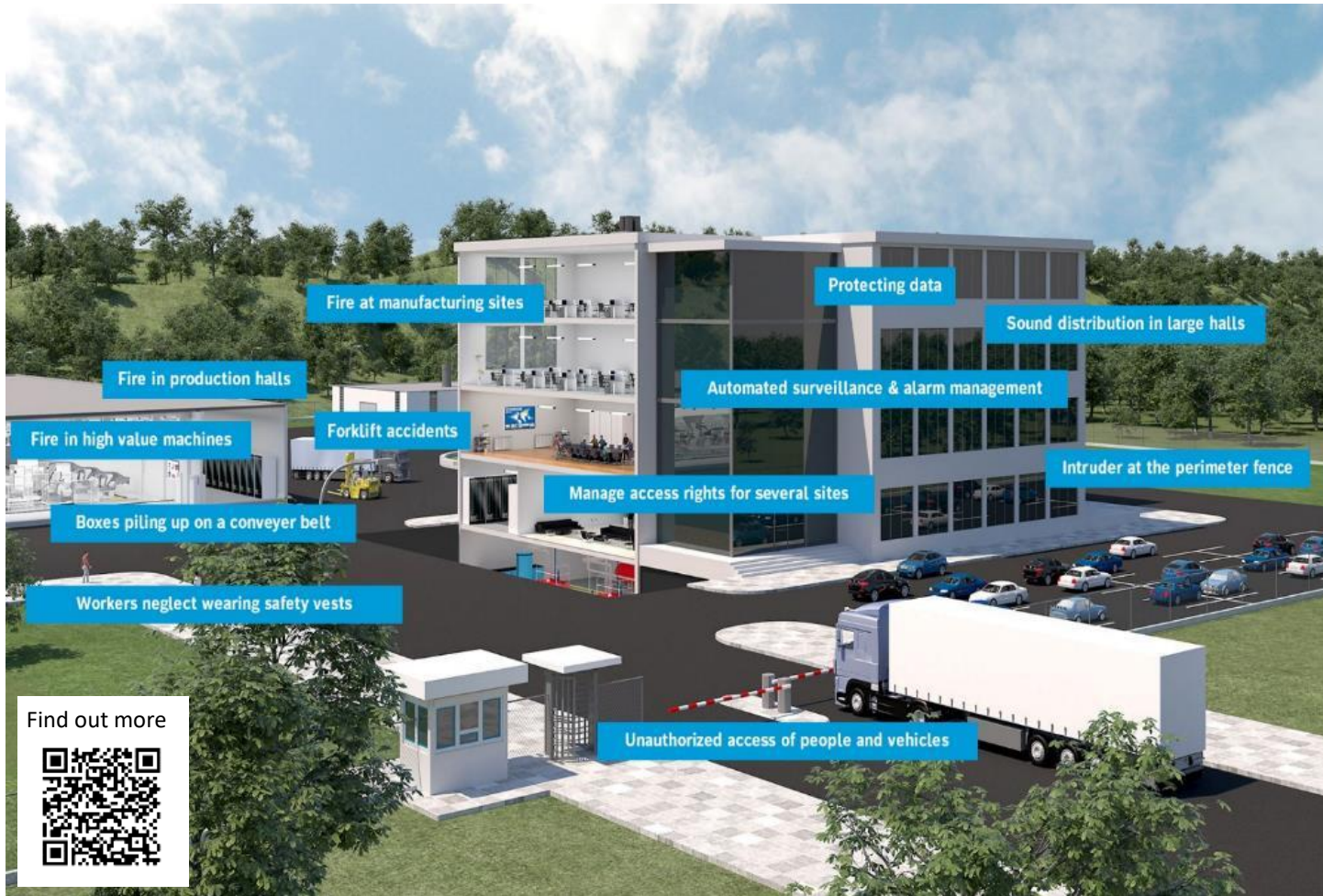
Find out more





# Manufacturing solutions

## Delivering business continuity for production



Control access rights which apply to several sites in an efficient and transparent way



Automate fence protection and implement powerful tools for fast intervention



Detect flames and smoke in harsh environments like dusty industries



Monitor high value machines to minimize damage and production interruptions



Use surveillance cameras to enforce safety rules and prevent forklift accidents

Find out more



## Building Technologie

Our portfolio covers all ranges of low current sub systems required in every project. We always make sure to offer quality brands that are scalable, future proof and tackle complex challenges.



**BOSCH**

Security, Safety, Coms



Clock System,  
Scoreboards



Nursecall System

rayTEC<sup>®</sup>

LED Lighting Video  
Surveillance



Scanner Technology

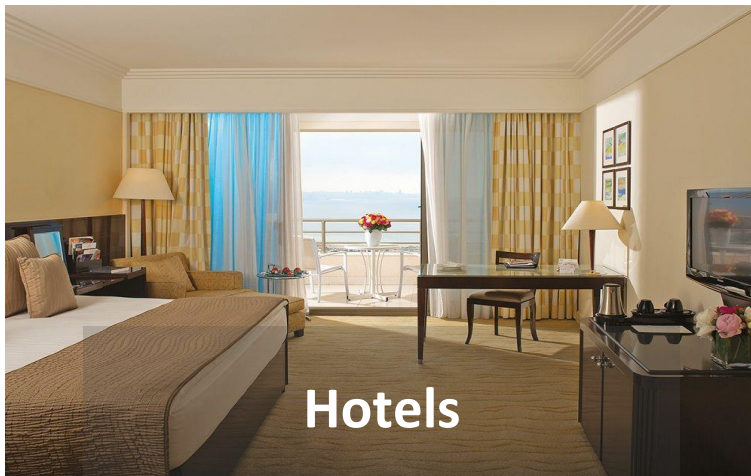


A Bosch Company

Building Automation

# Application Market

Transforming every place



# Portfolio

Integrated Building Solutions of Security Engineering

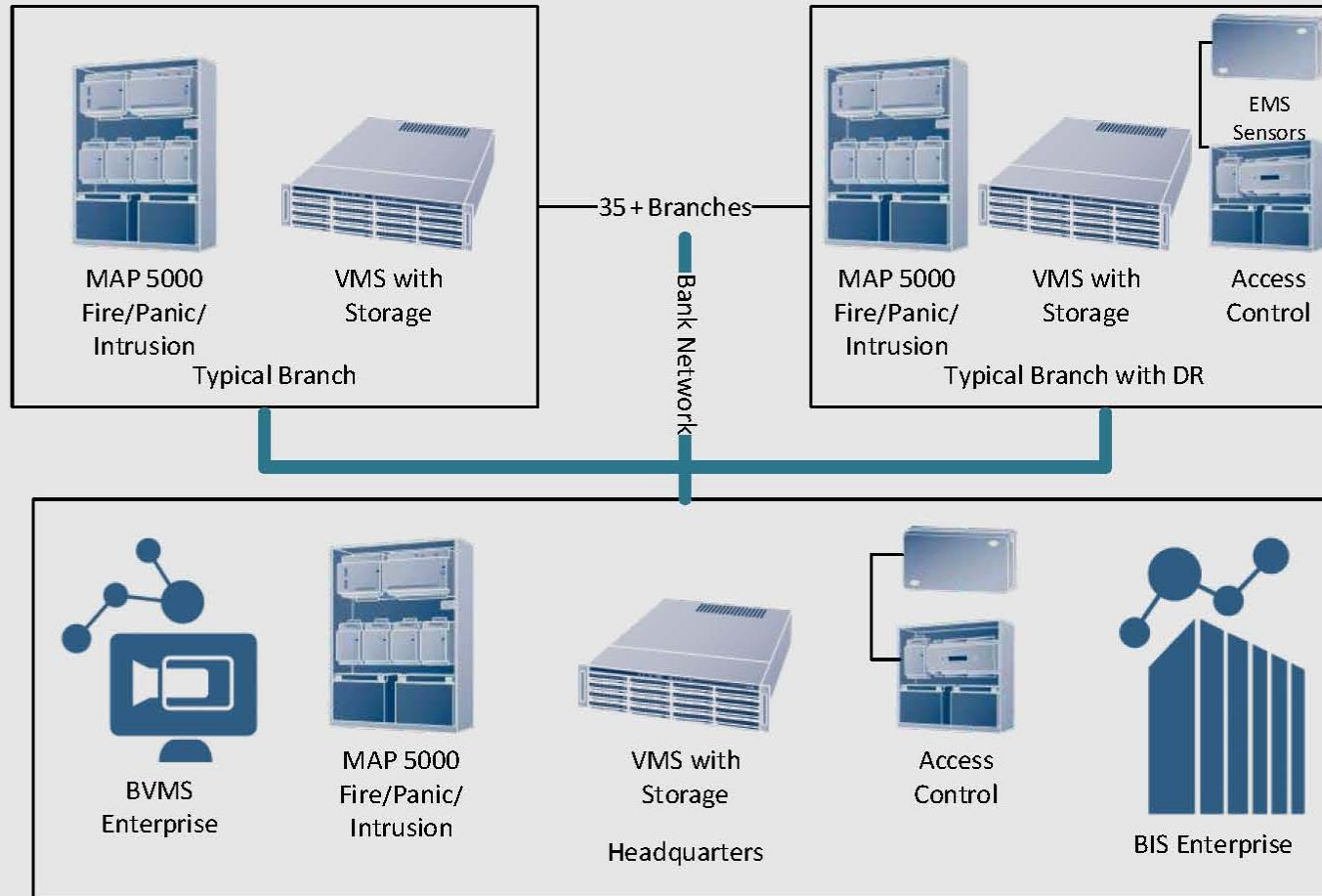
---

## Building Loyalty

Long-term relationship with clients, providing them with scalable systems that will ensure that any demanding new challenge or requirement can be met from our side by upgrading and adding features to existing infrastructure. This has resulted in complete Satisfaction for all clients and ease Of use for the integrated systems.



# CURRENT ARCHITECTURE





**Project Name:** Smart Connected Building  
**Scope:** Design, Supply and Apply  
**Location:** Lebanon

**Client:** A&S Chronora Building - Rolex  
**Sector:** Luxury Retail  
**Date:** 2016- present

**Challenges:** Provide a complete integrated security and safety solution for Chronora building in downtown, meeting aesthetics demands for minimalistic design and hidden elements. Centralize the security systems between offices and showrooms in Downtown Beirut and Jounieh.

**Result:** Installation of flush mount smoke detectors and flush mount cameras. Setting up a centralized server for all branches with seamless connection for alarm notification and better security reports and performance.

#### **System**

Flushed optical detectors, FPA 1200, Panoramic flush-mount cameras, access control readers and panels, meeting recording, integration with CRM for black list white list filtering of visitors.

# ARMY PROJECT

## AN HOLISTIC INTEGRATION

### Existing Integrated 72 Sites

#### Communication

- Microwave links and analysis (Strength, status, etc)
- MTS power monitoring and ON / OFF power control.
- MTS in Alarm

#### Environmental

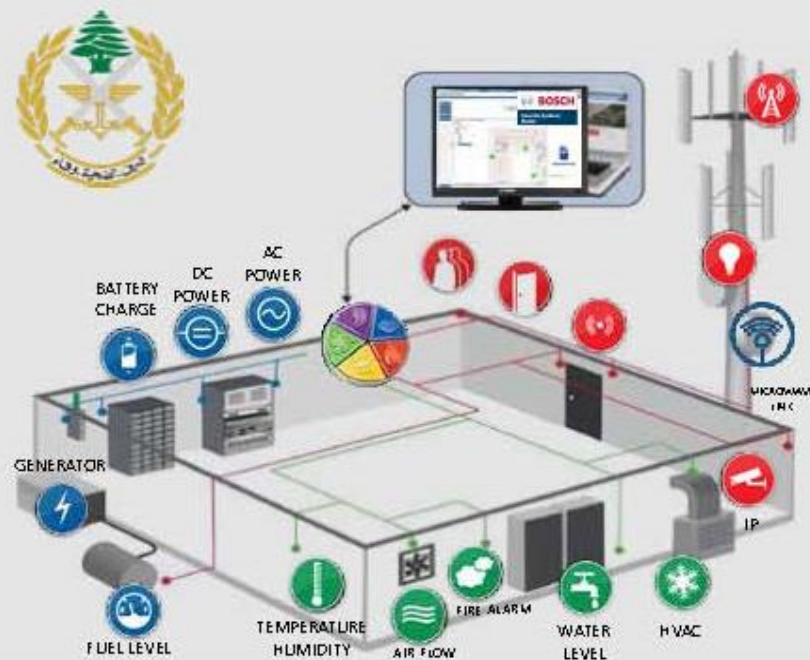
- Temperature Monitoring
- Humidity Monitoring
- HVAC control and Monitoring

#### Security and Safety

- Access Control
- Intrusion Detection
- Camera Surveillance
- Fire Detection
- Fire Suppression

#### Power Monitoring

- Generator Control and Monitoring
- UPS control and monitoring
- Auto Load Shedding based on Battery %





# Recorded Operation

**Building Integration System**

BOSCH Building Integration System - http://MINDOWS-JSBTQ/Document/indexWide.htm (Version: 4.2.8800.0)

State	Current state	Alarm state	Address	Time	Location	Prio	Operator
NEW	AccessEngine.MTS	Alarm Trigger	gms.Devices.Aabey-MTS-Ext.S08	3/26/2017 23:34:27	BIS.Detectors without location	50	
NEW	AccessEngine.MTS	Subsalar Alarm	ms.Devices.Taraya-MTS-EXT.S08	3/26/2017 23:37:23	BIS.Detectors without location	50	

Total: 2 New: 2 Workflow: 0 Accepted: 0 Accepted at this workstation: 0

**Outdoor Motion**

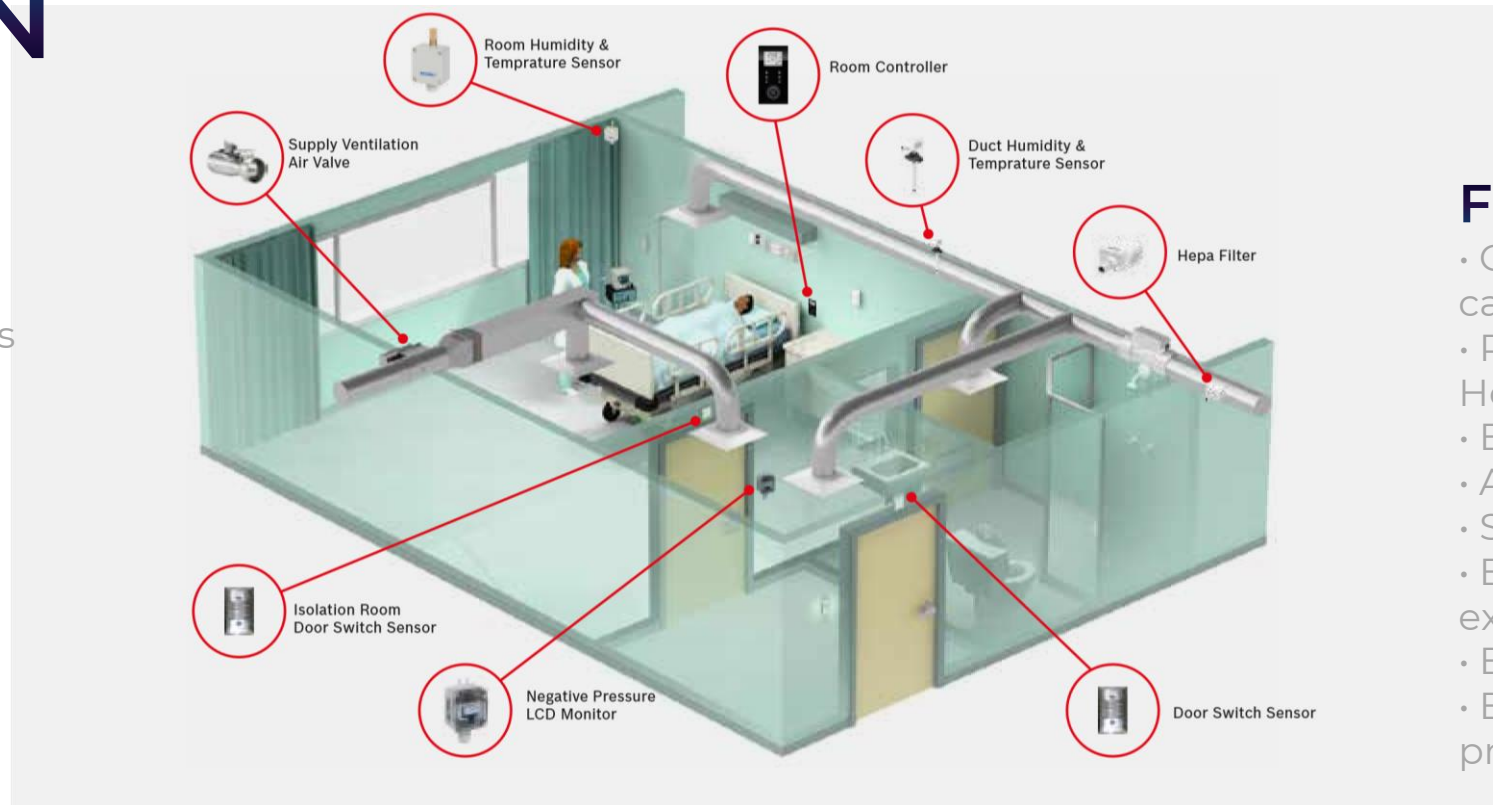
Address	AccessEngine.Devices.Aabey-MTS-Ext.S08
Location	BIS.Detectors without location
Description	
Alarm time	Sunday, March 26, 2017 23:34:26

**Regions:** NORTH, BEIRUT, MOUNT LEBANON, BEKAA, SOUTH

**Devices:** Aabdeh, Bire, Akroum, Fihar, Kolba, Terbal, Ayoub, Beino, Beino, Aastou, Hamat, Assia, Behealy, Hardine, Maad, Bedra, Ghosia, Boloua, Laqlou, Badam, Yaza, Qibaz, Naas, Beitedd, Barak, Bortan, Feytron, Siman, Aabey, Chehim, Baydar, Saida, Sabah, Jabakaf, Marjou, Amar, Nabaty, Kafra, mkarab, Barakar, Sofiane, Chabab, EinDil, Tibhat, Chamaa

# CRITICAL ENVIRONMENT MONITORING SOLUTION

Negative pressure rooms in hospitals are built to contain dangerous airborne contaminants like tuberculosis and vaporized cough so healthcare staff can safely treat highly infectious diseases. In essence, negative pressure rooms are built to contain contaminants. These spaces include COVID-19 isolation Rooms.



## FEATURES

- Connection with nurse call
- Retrofit Solution for Hospitals
- Easy Interface
- Alarming Capabilities
- Standalone solution
- Easy integration with existing BMS
- Ensure clean rooms
- Ensure proper pressurization

# Negative Pressure Room Packages

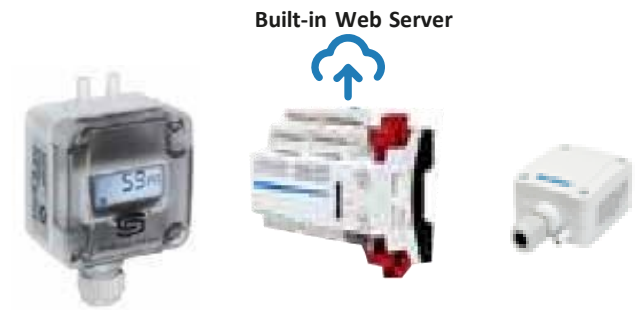
## Negative Pressure Rooms

Monitor negative Pressure of up to 6 rooms using one EMS5 controller.

- Ensure proper pressurization
- Maintain working conditions
- Connect to nursecall or BMS
- Optional sensor with LCD

## Monitor negative pressure, humidity, temperature and air quality in room & ducts

- Ensure proper pressurization
- Maintain working conditions
- Maintain clean air
- Critical Environmental Monitoring



Up to 6 Rooms / Controller



Up to 2 Rooms / Controller

# After Sales

We Offer More



A leader in repair and tech-support service

- ▶ Extensive range of genuine spare parts and swap units
- ▶ Fast turn around times – repair usually within 3 days
- ▶ Free pick up organized by us
- ▶ Trained, professional experts for repair and tech support

Handle all vendors' RMA procedures with our partners Back to Back

Downtime kept to a minimum

All-inclusive flat-rate prices ensure predictable operation costs

- ▶ Up to 5 year guarantees (depending on product)
- ▶ At least 5 years of service on products even after end of life
- ▶ Advance Exchange Service available for selected products

# Contact Information

---

[info@NWTECS.com](mailto:info@NWTECS.com)  
[www.NWTECS.com](http://www.NWTECS.com)

Thank you

---